



IBMC

INSTITUTO DE BIOLOGIA MOLECULAR E CELULAR
INSTITUTE FOR MOLECULAR AND CELL BIOLOGY

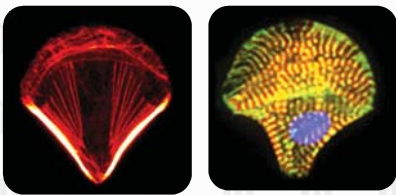
OCTOBER 18th, 2011

Joint CYTOO-IBMC Practical Workshop

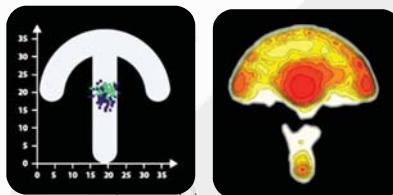
Automated High Content Analysis

Using CYTOO's Cell Normalization Technology for Fast and Reliable High Content Cell Analysis

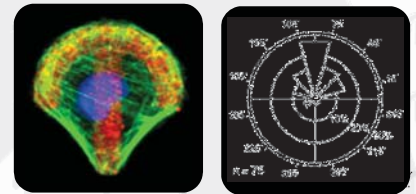
Cytoskeleton



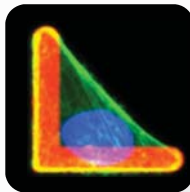
Organelle Mapping



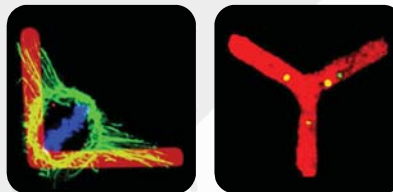
Cell Polarity



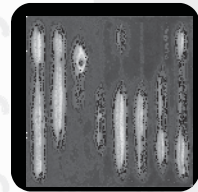
Cell shape & morphology



Cell Division



Cell Migration



Discover CYTOO: and

- Normalize Cell behavior
- Reduce assay variability
- Explore a large panel of Cell Functions
- Build a Reference Cell™

The workshop will focus on the practical aspects of using micropatterned cell supports (**CYTOOchips**) in a model "dose-response" drug assay. After a short presentation, CYTOO experts will illustrate how to:

- (i) efficiently automate image acquisition with cells plated on micropatterned CYTOOchips (**Wide field microscope/Micro-Manager**);
- (ii) apply image cell analysis algorithms to measure parameters of interest within individual cells (using **ImageJ macros**);
- (iii) obtain statistically relevant data with only 50 cells.

Contact CYTOO: Mathieu Raul
E-mail: mraul@cytoo.com
Cell : +33 7 86 63 99 53

Contact IBMC: Paula Sampaio
E-mail: sampaio@ibmc.up.pt



CELL ARCHITECTS

Lecture (10h-12h)
Main auditorium
Upon registration

Practical sessions (13h30-18h30)
Rooms 1.06 and 1.05
Upon registration