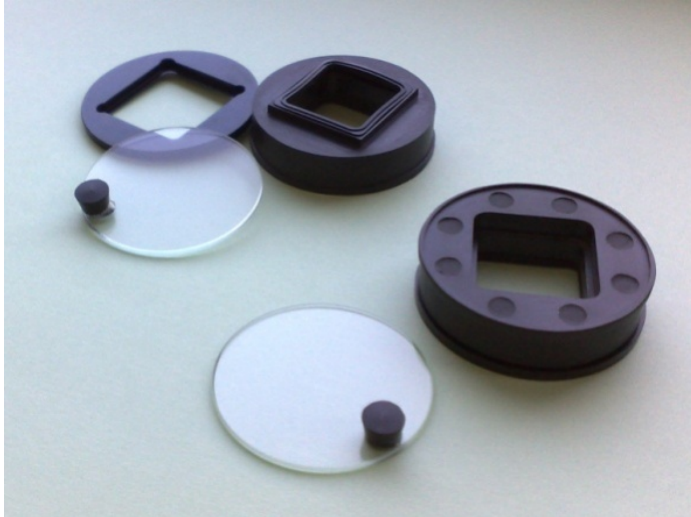


CYTOOchamber™



The CYTOOchamber™ is a 35mm footprint device specially designed and manufactured for our 2x2cm² square CYTOOchip™ format which enables you to do high resolution timelapse microscopy.

Features

The CYTOOchamber uses a patented magnetic system (from Live Cell Instrument) for easy assembly. It is recommended for weak fluorescence signal observation.

The CYTOOchamber has the same footprint as standard 35mm culture dishes and therefore will fit into all 35mm microscope stage adaptors.

Elements:

- 1 bottom plate
- 1 upper main body
- 1 transparent glass cover
- 1 black silicone gasket + 1 extra
- 1 glass coverslip
-

Cleaning and Storage

Before using the CYTOOchamber for the first time and between experiments, all parts should be washed quickly in soapy water (neutral dish washing liquid will do), rinsed extensively in distilled water, soaked in 70% ethanol and dried under a laminar hood.

Alternatively, the chamber can be autoclaved.

Magnetic chamber assembly

Before using the magnetic chamber for the first time, we highly recommend you practice mounting the “dummy” coverslip provided with the CYTOOchamber a few times, as the magnetic force holding the two parts together is quite strong (see steps 3 and 4).

1. Seed the cells onto a CYTOOchip as described in the CYTOOchip protocol (steps 1 through 6).

2. Using tweezers, transfer the CYTOOchip to the thin bottom plate taking care not to dry the surface of the CYTOOchip (simply keep the chip horizontal).
3. Make sure the silicone gasket is correctly fitted on the main upper body
4. Grasp the thin bottom plate carrying the CYTOOchip by the sides in one hand and slowly bring it into contact with the main body. The main body will automatically attach to the bottom plate by **magnetic force**.



5. Fill the chamber with culture medium making sure the level of liquid is slightly higher than the inside step (approximately 2.5 ml). This will bring the meniscus away from the observation area.
6. Cover with the transparent lid and wipe off the backside of the CYTOOchip.
7. Place on the 35mm microscope stage adaptor, taking care to orient the chamber so that “CYTOO” is visible in the right bottom corner. This will orient the grid coordinates and make it easy to find your way around the CYTOOchip layout.

*Alternatively, you can also use pre-assembled chamber to directly seed the cells but seeding will be much less homogeneous and occupancy rate of micropatterns by single cells will be lower.

Warning

The CYTOOchamber being magnetic, it will attach to ferro-magnetic materials such as microscope antivibration tabletops. **DO NOT** place your mounted CYTOOchamber on these surfaces. When you try to pick it up again, the bottom plate will stay stuck to the table and cell medium will flow out!

Technical support

support@cytoo.com. Please use this email address for any questions or requests for information concerning the product. We will then put you in direct contact with one of our experts.

Ordering information

Cat. No.	Product
A-CH35	CYTOOchamber™ 35 mm

© 2009 CYTOO S.A. CYTOO™ and CYTOOchip™ are trademarks of CYTOO S.A.
 CYTOO S.A. 7, parvis Louis Néel, BHT 52, BP50, 38040 Grenoble cedex 9, France
 CYTOO, Inc., 161 Worcester Road, Suite 303, Framingham, Massachusetts 01760, USA